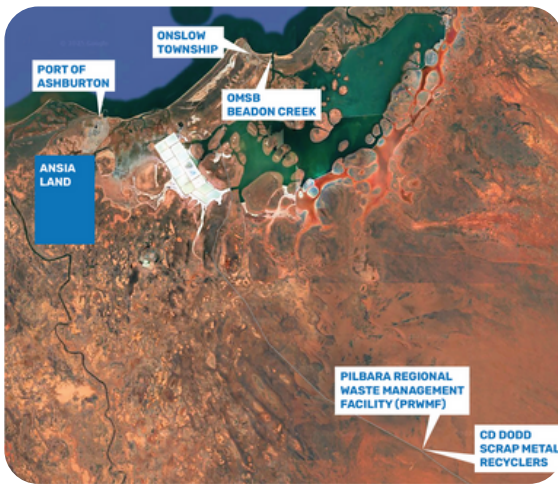


Onslow's Integrated Maritime and Logistic Solution Provider

OMSB is a purpose-built marine base, strategically positioned in Onslow offering direct access to the key North West Shelf oil and gas fields between Exmouth and Dampier.

We are more than a port operator - we are a stevedore, logistics manager, and integrated solutions provider that is also designed to support the full lifecycle of offshore decommissioning.

Our mission is to provide a **new maritime logistic solution**, for supply chain activities in the North West region of WA, with **definitive solutions** for oil & gas, decommissioning, general & containerised cargo and vessel support & maintenance.



Key Advantages and Supporting Infrastructure:

- **Two Ports:** Beadon Creek and Port of Ashburton
- **Avoids major** LNG, salt, and iron ore **shipping channels**
- **Proven Track Record:** 5 major decommissioning projects already completed in Onslow
- **Class IV Waste Facility** for compliant disposal
- **Industrial Land Availability**
- **Licensed Decommissioning Site**
- **Comprehensive** support for marine and rig operations

These assets collectively ensure end-to-end capability for dismantling, recycling, and waste management, making Onslow a fully integrated decommissioning ecosystem.

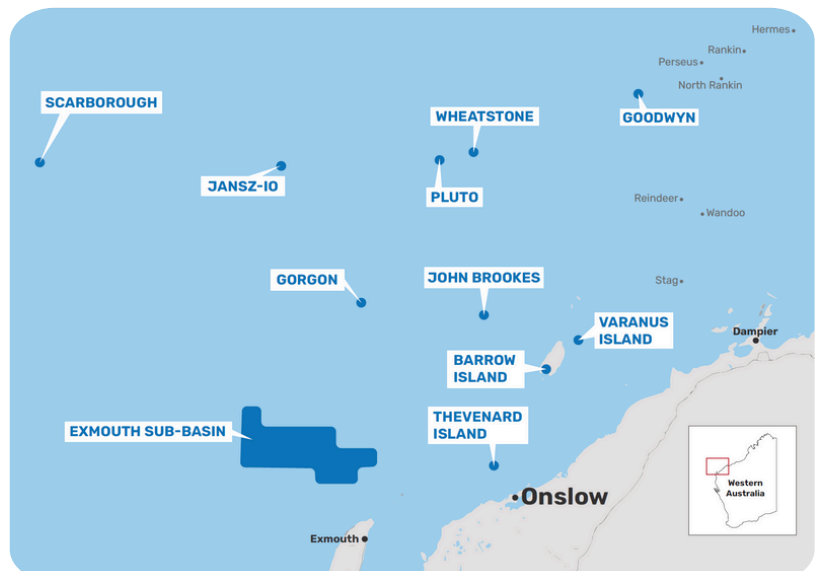
In 2025, OMSB celebrates 10 years since its inception, having deployed over \$200,000,000 in capital, and more recently expanded its service offering to meet the evolving needs of the offshore sector.

Specialised Services:

- **Exclusive Quayside Vessel Maintenance:** For SPS, UWILD, and OOS periods
- **Rig Maintenance Support:** Quayside inspection and repair services
- **Shoreside Storage & Maintenance:** Multi-land options with advanced technology to minimise out-of-service periods
- **Supply Chain Leadership:** Ensuring reliability, quality, and preservation assurance
- **Reefer Points:** 6 onsite, site crew certified in safe food handling, reefer containers available on request

On-site Service Provisions

- **Marine and Construction Services:**
Specialising in all aspects of vessel and offshore platform maintenance and repair, and vessel mobilisations.
- Support **fabrication** works onsite
- **Holdfast Fluid Power:** Delivering onsite hydraulic and pneumatic hose manufacturing services
- **Fuel upgrade:** infrastructure to support 900,000L of fuel storage and a bunker rate of 1,000LPM - completed end Q4 2025
- **Potable Water:** Upgrade water system to hold 800,000L along with new piping and bunker points to the quay to support 1,000LPM flow rate into vessels, Q4 2025



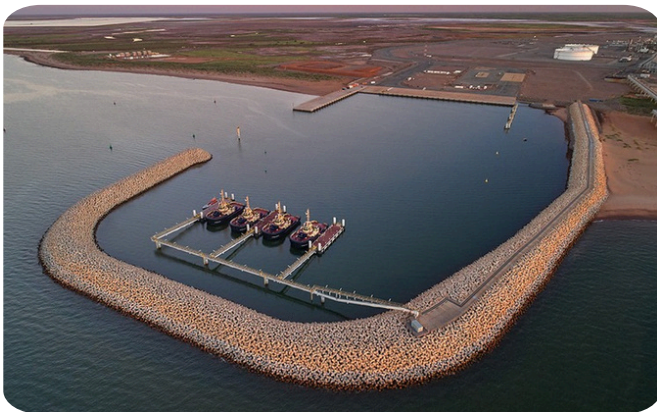
OMSB: Dual-Port Powerhouse

Beadon Creek and Port of Ashburton

OMSB's collaboration with Pilbara Ports at the Port of Ashburton (POA) enhances Onslow's capacity to deliver full-service, solutions focused service model in the North West of WA. Located just 17km from Beadon Creek, POA offers seamless integration with OMSB's operations.

OMSB Beadon Creek Facility

- **3.5km** marine channel
- Vessels up to **120m LOA** | **6.5m** draft
- **277m** of berth line
- **Dual LCT** ramps capable of servicing two LCTs simultaneously
- **31,000m** of hardstand adjacent to the berth
- **Heavy lift crane** capabilities with proven track record for an 800t crawler support quayside operations
- **24/7** multi-user port operations
- **Support services** including, fuel, water, hot works, maintenance & fabrication support, high pressure manufacturing other vessel services
- Large-scale **industrial land** availability
- **Residential staff** based in Onslow
- **Decommissioning** ready site including



Port of Ashburton

- Vessels up to **166m LOA**
- **8m draft**
- **24/7** multi-user operations
- OMSB operates as a **Licensed Stevedore** at POA

Client Benefits:

- **Dual-port access** with a single service provider
- **Streamlined logistics** for mobilisation and demobilisation
- **Reduced project risk** through operational redundancy
- **Cost-effective scheduling** and berth availability



Contact Us

- ☎ +61 430 537 636
- @ enquiries@omsb.com.au
- 🌐 omsb.com.au

Port Operations

Lot 13, Beadon Creek Maritime Facility,
Onslow WA 6710

OMSB Head Office

Level 1, 441 Stirling Highway
Cottesloe WA 6011

Licences & Market Access:

- Fully licenced for decommissioning and marine services
- Cost-effective, quality-assured, and reliable solutions

